



Connecting you for
brighter Future.

Eman Trading & Maintenance Company

شركة إيمان المستقبل للتجارة والصيانة

Specialist for Automation, Electrical, Instrument, Electro-Mechanical, Mep Spares &
Technical Services

SIEMENS



OMRON

KEYENCE

Koyo

Allen-Bradley

IDEC

Schneider
Electric

TOSHIBA

Rexroth

HITACHI

EATON

ABB

Honeywell

Panasonic

YOKOGAWA



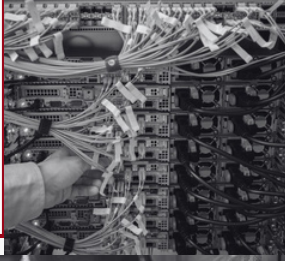
info@emanftc.com



Al Slouley Building, Al Malaz, Riyadh, KSA



www.emanftc.com

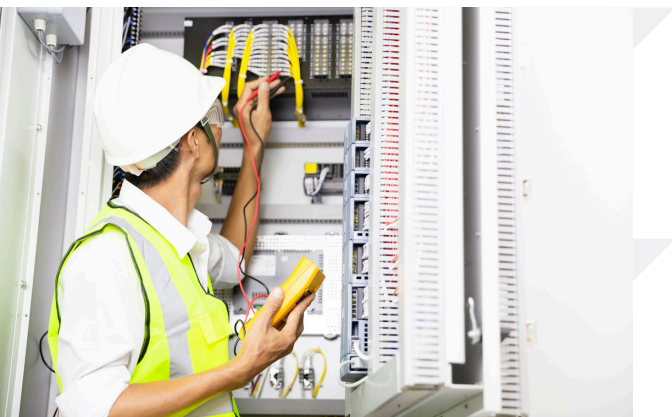


Introduction



Electrical, Maintenance Automation Network (EMAN)

EMAN (Electrical, Maintenance Automation Network) Future Trading Company is the Upgraded from Hussain Ali Hussain Trading Establishment Riyadh KSA under the same Commercial Registration which was serving in Saudi Arabia Since Aug, 2012. EMAN Future Trading Company is having a very aggressive & challenging motto that is to provide Good Quality materials with lowest & best prices as well as to give fast after sales support in the field of Electrical, Instrument, Automation, Electro-Mechanical, HVAC, Fire Alarm & Fire Fighting required by Industrial & Commercial Sector specially Airports, Hospitals, Sports Complex, Cement Plant, Petrochemical Plants, Steel Plant, Foods & beverages, paper, Ghee and Sugar industries.



We strive to provide our clients with the ideal solutions suited to their requirements and the best value for their money. Our company has associations with renowned manufacturers, major mills and suppliers across Europe, USA, Japan, China, India, UK, Taiwan and we are continuously adding more products to our range to meet the growing needs of Saudi Arabia industries & Infrastructure.



info@emanftc.com



Al Slouley Building, Al Malaz,
Riyadh, KSA



www.emanftc.com

EMAN

Electrical, Maintenance Automation Network

FUTURE TRADING COMPANY



ABOUT US

EMAN (Electrical, Maintenance Automation Network) Future Trading Company is the Upgraded from Hussain Ali Hussain Trading Establishment Riyadh KSA under the same Commercial Registration which was serving in Saudi Arabia Since Aug, 2012. EMAN Future Trading Company is having a very aggressive & challenging motto that is to provide Good Quality Material with lowest & best prices as well as to give fast after sales support in the field of Electrical, Instrument, Automation, Electro-Mechanical, HVAC, Fire Alarm & Fire Fighting in the field of Industrial & Commercial Sector specially Airports, Hospitals, Sports Complex, Cement Plant, Petrochemical Plants, Steel Plant, Foods & beverages, paper, Ghee and Sugar industries.

We strive to provide our clients with the ideal solutions suited to their requirements and the best value for their money. Our company has associations with renowned manufacturers, major mills and suppliers across Europe, USA, Japan, China, India, UK, Taiwan and we are continuously adding more products to our range to meet the growing needs of Saudi Arabia industries & Infrastructure.

EXECUTION

EMAN Future Trading Company always tries to provide high quality of Electrical, Instrument, Automation, Electro-Mechanical, HVAC, Fire Alarm & Fire Fighting components/equipment's, required by almost all sectors of automation and electrical power system. We always keep an eye on the latest technological developments that will help us to provide the best and good quality material with after sales support with the help of highly qualified Engineering Team in Electrical, Instrument, Automation, Electro-Mechanical, HVAC, Fire Alarm & Fire Fighting sectors.

Also, with the help of professional, technical, qualified & supporting staff, EMAN Future Trading Company can provide excellent system solutions by offering excellent engineering service in form of design, development, installation, testing, supervision & commissioning for any kind of technical task/project related to any manufacturing, control and Power automation system.

EXECUTION

In addition, we have formed reliable associations with world-class manufacturers and suppliers who provide us with direct access to their extensive knowledge base at the cutting edge of technology.



info@emanftc.com



Al Slouley Building, Al Malaz,
Riyadh, KSA



www.emanftc.com



EMAN

Electrical, Maintenance Automation Network

FUTURE TRADING COMPANY



PARTNERSHIPS BUILT ON TRUST

We believe in forging strong, lasting partnerships with our clients. By aligning our expertise with your goals, we ensure that every project is a collaborative success. Your satisfaction fuels our ambition, and we are with you at every stage, from consultation to execution—ensuring optimal results.

Proudly Trusted by Industry Leaders

At EFTMC, we're honored to work with some of the most prestigious brands across various sectors.

From global powerhouses like Saudi Aramco, Sadara, and Nestlé, to leading cement companies such as Najran Cement, Qassim Cement, and Riyadh Cement, our automation, power, and control expertise has consistently delivered impactful results.

Trusted by Industry

أرامكو السعودية
saudi aramco



Najran
CEMENT
NAJRAN CEMENT COMPANY



أسمنت الرياض
RIYADH CEMENT



صدارة
Sadara

أسمنت القصيم
Qassim Cement



info@emanftc.com



Al Slouley Building, Al Malaz,
Riyadh, KSA



www.emanftc.com



Our clients

Our clients rely on us to enhance efficiency and innovation across their operations and trust us for advanced, scalable solutions tailored to their unique needs



info@emanftc.com



Al Slouley Building, Al Malaz,
Riyadh, KSA



www.emanftc.com

Projects by EMAN

EFTMC specializes in VFD installations, PLC control systems, and power management across Saudi Arabia, delivering tailored solutions with over 50+ global OEMs to enhance efficiency, safety, and innovation. See Our Work!!!



Installation & Commissioning of
ABB VFDs – Aramco, Riyadh



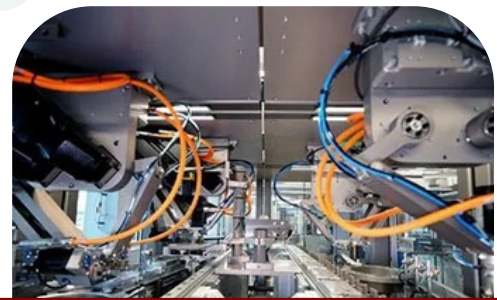
Installation & Commissioning
of ABB VFDs – United Sugar
Co., Jeddah



Modicon PLC Upgrades – Jeddah
Beverage Can Making Co. (JBCMC)



Installation & Commissioning of ABB
VFDs – Al Safwa Cement Co., Jeddah



ATS System Programming & Installation –
Prince Abdullah Hospital, Bisha



info@emanftc.com



Al Slouley Building, Al Malaz,
Riyadh, KSA



www.emanftc.com

Industrial Testing Division

1

We EMAN Future Trading Company are specialist to provide high-quality low-voltage products for the safe distribution of electricity in residential, commercial, and industrial properties.

We are using ABB, Schneider, Siemens, Mitsubishi, LS, CHINT, Circutor, Lifasa, EPCOS etc. products in below mentioned panels types.



Main Distribution Board

The main distribution boards are used to distribute and control the power supply in large buildings such as shopping malls, hospitals, universities, and hotels. The main distribution boards are generally installed after the main power source (eg. transformers or generators) and used to divide the power feed into subsidiary outgoing feeders

01



Sub-Distribution Boards

Our sub-distribution boards offer the right low voltage (LV) solution for large buildings by dividing the electrical power feed into subsidiary circuits. Sub-distribution boards are generally installed between the main distribution boards and the final distribution boards.

02



info@emanftc.com



Al Slouley Building, Al Malaz,
Riyadh, KSA



www.emanftc.com



Motor Control Centers

EMAN Electric's motor control centers are equipped with motor starters, protection devices, power feeders, and interlocking relays in a modular enclosure. They are used mainly in industrial buildings such as water pumping and treatment plants to provide a central control unit for multiple electric motors

03



Synchronizing Panels

Our sub-distribution boards offer the right low voltage (LV) solution for large buildings by dividing the electrical power feed into subsidiary circuits. Sub-distribution boards are generally installed between the main distribution boards and the final distribution boards.

04





Automatic Transfer Switch

EMAN Automatic Transfer Switch (ATS Panels) provide a solution to handle transfer of critical loads to emergency sources using simple design with high reliability. Ensures the continuity of electrical supply with minimum interruption via an automatic change-over system from normal supply to emergency supply.

05



Power Factor Correction Panels (PFC)

The power factor correction panels are designed to improve the power factor in electrical systems while ensuring energy and cost efficiency. They are suitable for a variety of processing plants with fluctuating loads, such as steel plants, chemical plants, paper mills, and automotive plants.

06



LOW VOLTAGE VARIABLE SPEED DRIVE (VFD) AND **SOFT STARTERS**

Variable speed drives and soft starters offering a powerful and reliable combination for your motor control solutions up to 20 MW. Starting from compact products to custom-engineered solutions, they are developed to the highest quality level to meet your needs in various applications, such as industrial processes, machines or buildings.

Since We EFTC are having very special agreement with Global Suppliers so we are specialist to provide Low Voltage Speed Drive and Soft Starter of different Brands like Schneider, ABB, Siemens, LS, Danfoss, Allen Bradley Power Flex, Delta, Yaskawa etc.



SCHNEIDER VSD



ABB VSD



Siemens VSD



LS VSD



DANFOS VSD



Allen-Bradley Power Flex



Delta VSD



YASKAWA VSD



Power Products

Circuit Breakers

5



MCB – Miniature Circuit Breaker

A miniature circuit breaker (MCB) is an Electrical Switch that automatically switches off the electrical circuit during an abnormal condition of the network means an overload condition as well as a faulty condition.



MCCB – Molded Case Circuit Breaker

MCCB is Molded Case Circuit Breaker. It is another type of electrical protection device which is used when load current exceeds the limit of a miniature circuit breaker. The MCCB provides protection against overload, short circuit faults and is also used for switching the circuits



RCCB – Residual Current Circuit Breaker

The Residual Current Circuit Breaker (RCCB) or commonly known as the circuit breaker is an electrical safety device that cuts off the electricity supply immediately upon detecting leakages that may result in an electric shock.



info@emanftc.com



Al Slouley Building, Al Malaz,
Riyadh, KSA



www.emanftc.com

Power Products

Circuit Breakers

6

Contactors

A contactor is an electrical device that is widely used for switching circuits on and off. As such, electrical contactors form a subcategory of electromagnetic switches known as relays. A relay is an electrically operated switching device that uses an electromagnetic coil to open and close a set of contacts.



Power Meters

An electric meter, or energy meter, is a device that measures the amount of electric energy consumed by a building, tenant space, or electrically powered equipment. Electric utilities use electric meters installed at customers' premises to measure electric energy delivered to their customers for billing purposes.



DC Power Supplies

Industrial power supplies provide reliable DC power in many form factors and styles, including DIN-rail mount, machine mount, enclosed panel mount, encapsulated chassis mount, open frame, and linear power supplies. Specialty modules provide steady, reliable power even through a power failure.



info@emanftc.com



Al Slouley Building, Al Malaz,
Riyadh, KSA



www.emanftc.com

Power Products

Circuit Breakers

7

Transformers

Transformers use electromagnetic induction to perform voltage conversion and provide isolation, and are available in encapsulated, ventilated/ open, buck-boost, and compact control styles in various ratings and configurations.



Current Transformers

Current transformers offer a compact, cost-effective means of measuring primary current, producing an output proportional to the current flowing through the sensing window. AcuAMP current transformers are ideal for connecting to panel displays or meters, as well as data loggers or chart recorders.



info@emanftc.com



Al Slouley Building, Al Malaz,
Riyadh, KSA



www.emanftc.com



Pressure transmitters

A pressure transmitter is a mechanical device that measures the expansive force of a liquid or gaseous sample. Also known as a pressure transducer, this type of sensor is typically composed of a pressure sensitive surface area made of steel, silicon, or other materials depending upon the analyte's composition.

Temperature Transmitters

A temperature transmitter is used in industrial processes to accurately monitor and control temperatures. Temperature sensors generate electrical signals that are converted into a standardized output signal by the transmitter, usually into a 4-20 mA or 0-10 V signal.



PT100 Temperature Sensors 4-20mA
0-10V Temperature Transmitter Probe



Instrument Products

Sensors

9

An electrical sensor (also called an electronic sensor) is a device that detects a physical parameter of interest (e.g. heat, light, sound) and converts it into electrical signal that can be measured and used by an electrical or electronic system.

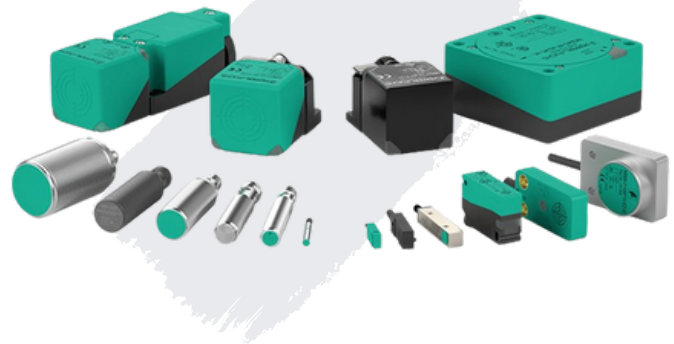
Photoelectric Sensors



A photoelectric sensor is a device used to determine the distance, absence, or presence of an object by using a light transmitter, often infrared, and a photoelectric receiver. They are largely used in industrial manufacturing.

Inductive Proximity Sensors

The inductive proximity sensor precisely detects metallic objects even in harsh usage environments. In price-sensitive mobile applications and automation solutions, it is suitable as a switch for end position determination of speed measurement.



Fiber Optic Sensors

Special electronics are used to efficiently achieve long sensing distances and ranges in conjunction with fiber-optic cable systems, regardless of the limiting factors in the standards for device category 2G.



info@emanftc.com



Al Slouley Building, Al Malaz,
Riyadh, KSA



www.emanftc.com

Instrument Products

Sensors

10



Distance Sensors

Simple, precise, and economic solutions for measuring tasks; the OD Mini displacement measurement sensors are impressive with their compact and rugged housing, which is available in a lightweight aluminum or a rugged stainless steel.

Safety Relay

With the clever Rely safety relay, you get even more out of your application, and that with high safety at performance level.



Safety Controllers

Intuitive project planning of SICK safety sensors and safety controllers is carried out using the free Safety Designer configuration software.



Intuitive configuration software for safety products from SICK



info@emanftc.com



Al Slouley Building, Al Malaz,
Riyadh, KSA



www.emanftc.com

Instrument Products

Sensors



Safety Light Curtains

the safety light curtain in miniature format – in hazardous point protection for finger and hand protection.

Radar Sensors

Radar sensor is designed to detect obstacles, even in the most adverse ambient conditions. Even in heavy rain or snowfall, dense fog and in very dusty environments, it detects objects reliably.



RMS10001D radar sensor for reliable object detection in especially harsh weather conditions



MWS075 Compact measuring wheel encoder with high flexibility and easy installation

Motion Control Sensors

The motion control sensor precisely measures dynamic linear surface movements using direct contact, thereby allowing it to be seamlessly integrated into the application environment.



Instrument Products

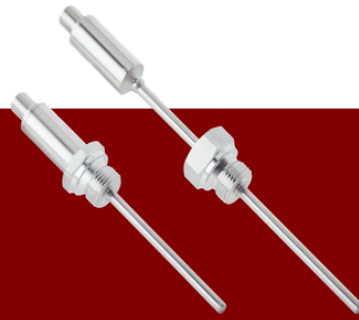
Sensors

12



Pressure Sensors

The pressure transmitter precisely measures pressures in liquids and gases.



TCT Compact, rugged, precise

Temperature Sensors

The temperature sensors precisely measure temperature in liquids and gases.



Flow Sensors

The energy consumption flow sensors indicate gas flow and temperature as well as the process pressure, making it a cost-saving multi-talent.



Level Sensors

Level sensor for liquids using TDR technology – a process for determining the time of flight of electromagnetic waves. The time difference between the sent pulse and the reflected pulse is used to generate a level signal.



info@emanftc.com



Al Slouley Building, Al Malaz,
Riyadh, KSA



www.emanftc.com

Instrument Products

Sensors



Gas Analyzer

Gas analyzer system (PGA) combines the benefits of a transmitter design with the flexibility of an extractive analyzer system.



Safety Light Curtains

the safety light curtain in miniature format – in hazardous point protection for finger and hand protection.

Air quality measuring devices

This is an all-in-one solution for measuring visibility, CO, NO, and NO2 concentrations. It is exceptional solution that combines the scattered light measurement principle with electrochemical sensors – all in one compact housing.



SMOTEC450 Fast and reliable smoke detection for every type of tunnel



Electro-Mechanical products

An electromechanical device is one that has both electrical and mechanical processes. The device usually involves an electrical signal that creates a mechanical movement, or a mechanical movement that creates an electric signal.



Electric Motors

Electric motor is a device that convert electrical energy to mechanical energy, usually by employing electromagnetic phenomena.

Air Valve

Air Valves perform two important functions in a piping system. They maintain system design efficiency and provide system protection. System efficiency is maintained by venting air via the air valves from the system that can restrict flow and increase pumping costs.



Solenoid Valves

Solenoid valves are the most frequently used control elements in fluidics. Their tasks are to shut off, release, dose, distribute or mix fluids.



Electro-Mechanical products

15

Sensors

Sensors are used in various applications to monitor, measure, or control processes, equipment, or environmental conditions.



Transducers

A transducer converts energy from one sort to another. Generally, transducers convert one type of energy, for example, mechanical or magnetic, into something you can measure on the other end, an electrical signal.



Pumps



Pump is a mechanical device used to transfer different fluids from one position to another. It is a hydraulic device that lifts a fluid from a low to a high level and moves it from a low-pressure area to a high-pressure area. Pumps transfer fluids by converting the mechanical energy of the fluid into pressure energy (hydraulic energy).

Compressors



Industrial refrigeration systems are crucial components in various sectors, providing the necessary cooling and temperature control for processes and storage. These systems differ from commercial or domestic refrigeration in their scale, complexity, and the fact that they are typically tailored to meet specific industry requirements.



info@emanftc.com



Al Slouley Building, Al Malaz,
Riyadh, KSA



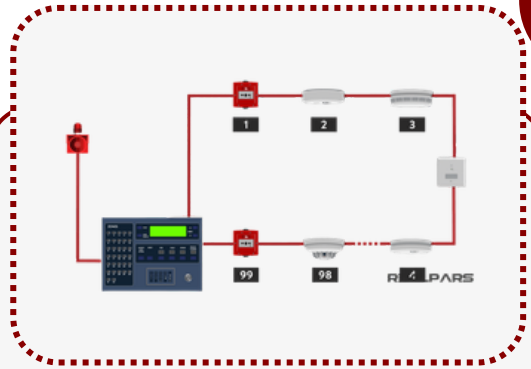
www.emanftc.com

Fire Alarm & Fire Fighting products



Fire Alarm System

A fire alarm is a unit made of several devices, which uses visual and audio signaling to warn people about a possible fire, smoke, or carbon monoxide occurrence in the area of coverage.



Fire Alarm System

A fire alarm is a unit made of several devices, which uses visual and audio signaling to warn people about a possible fire, smoke, or carbon monoxide occurrence in the area of coverage.



Ethernet Touch Call Station

ETCS adopts 7' touch screen for display and operation which provides a user-friendly interface. 4 bi-color LEDs are used for status indications which include microphone fault indication, system fault indication and connection states of two redundant cables.



Digital Multi-Audio Player

The Digital Multi-audio Player device features an integrated DVD/CD player, an MP3 player and an FM/AM tuner, as well as a USB/SD interface. The device supports two modes of operation. Mode of operation 1: DVD/USB/SD and FM/AM tuner can be operated simultaneously via two separate ports.



Fire Alarm & Fire Fighting products

17



Digital Noise Detector

Digital Noise Detector is used to detect ambient noise, automatically calculate the sound pressure level of the noise. Digital noise detectors are a key component of automatic volume control.

Volume Controller

The volume controller is used to keep same output level for one same speaker line, because the end the speaker line signal loss is rather big, so its outputs is less, thus volume controller is added to the front of the line to lower the speaker output so as to keep the similar ambient output level for the all of the speaker in the same line.



Dispatch Centers

Dispatch Centers can be controlled via the G2 Light Tower Interface.



info@emanftc.com



Al Slouley Building, Al Malaz,
Riyadh, KSA



www.emanftc.com

Fire Alarm & Fire Fighting products

18



Fire & Life Safety (FLS)

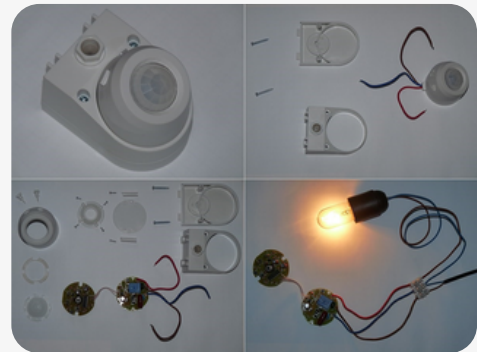
Fire and Life Safety Systems (FLS) are comprehensive and integrated network of components and devices designed to detect, notify, and respond to fire emergencies and other life safety threats within a building or facility.

Occupancy Sensors

Occupancy sensors are devices that detect when a space is unoccupied and accordingly automatically turn OFF (or dim) the lights, thereby saving energy. The device may also turn the lights ON automatically upon detecting the presence of people, providing convenience and a potential security aid.

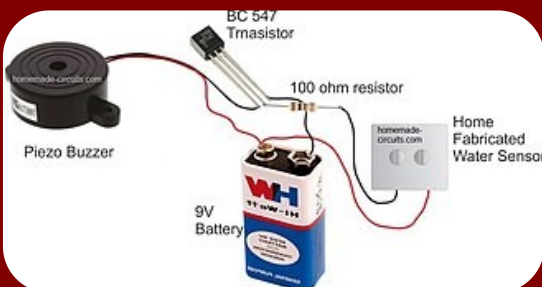
Motion Detector

A motion sensor, or motion detector, is an electronic device that uses a sensor to detect nearby people or objects. Motion sensors are an important component of any security system.



Water Detector

A water detector is an electronic device that is designed to detect the presence of water for purposes such as to provide an alert in time to allow the prevention of water leakage.



info@emanftc.com

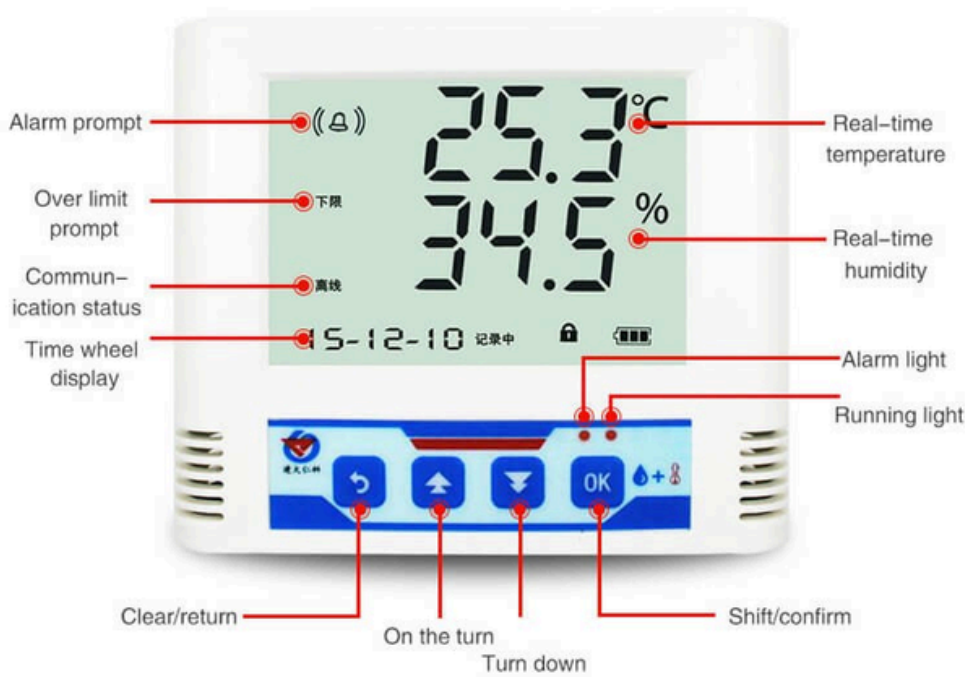


Al Slouley Building, Al Malaz,
Riyadh, KSA



www.emanftc.com

Fire Alarm & Fire Fighting products



Temperature and Humidity Transmitters

Temperature and humidity transmitters measure the amount of temperature and relative humidity in the air, and convert it into electrical signals or other signal forms according to certain rules and output the device to the instrument or software to meet the environmental monitoring needs of users.



Temperature and Humidity Transmitters

A smoke detector is a device that senses smoke, typically as an indicator of fire. Smoke detectors/alarms are usually housed in plastic enclosures, typically shaped like a disk about 125 millimeters (5 in) in diameter and 25 millimeters (1 in) thick, but shape and size vary.



Fire Alarm & Fire Fighting products

20



Pressure Switches and Sensors

They are commonly used in applications where pressure levels vary, such as in air compressors, hydraulic systems, irrigation systems, and HVAC systems. Air Pressure Switches: These switches are used to control air pressure in pneumatic systems, air compressors, HVAC systems, power tools, and various types of machinery.

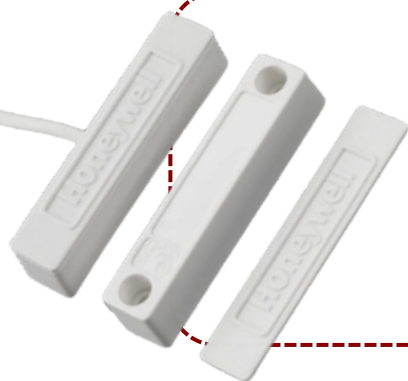


Light Sensors

Light sensors are a type of photodetector (also called photosensors) that detect light. Different types of light sensors can be used to measure illuminance, respond to changes in the amount of light received, or convert light to electricity.

Heat Detectors

A heat detector is a fire alarm device designed to respond when the convected thermal energy of a fire increases the temperature of a heat sensitive element.



Contact Sensors

A contact sensor is a simple device made up of two components: a magnetic piece and a sensor body. The magnetic piece is attached to a door or window and the sensor body is attached to a door or window jamb. When a door or window opens, the sensor's magnetic field breaks. This break flips a switch in the sensor.



info@emanftc.com



Al Slouley Building, Al Malaz,
Riyadh, KSA



www.emanftc.com

Lighting Solutions

21

Better energy performance by implementing innovative and turnkey lighting solutions. For industrial, commercial, and residential markets. EMAN Future Trading Co. offers lighting solutions for both construction and retrofit projects in many brands i.e. Philips, Osram, Al-Raed, Nasco, Hyundai, Ultra-Light, Oppl, FSL and Nerfa.

LED High Bay Lights

High bay lights are used to light up spaces whose ceilings are higher than 20ft from the floor and around 40ft.



LED Tube Light

LED Tube Lights are most often used in commercial, industrial, and retail settings, but they can also be used in residential settings.



Flood Lights

Flood light bulbs are specifically designed to light outdoor areas. Flood lights work by "flooding" an area with light. They can produce wider beams of light, usually up to 120 degrees.



info@emanftc.com



Al Slouley Building, Al Malaz,
Riyadh, KSA



www.emanftc.com



Street Light

A street light, light pole, lamppost, street lamp, light standard, or lamp standard is a raised source of light on the edge of a road or path.

Wall Lights

Wall lights are commonly used as general lighting, decorative lighting, or accent lighting. They're also used as a source of supplementary light, like task lighting.





Airport Lighting Systems

Airport Lightning System

The system consists of a pair of synchronized flashing lights located laterally on each side of the runway threshold. REILs may be either omnidirectional or unidirectional facing the approach area. They are effective for: Identification of a runway surrounded by a preponderance of other lighting.

Taxiway Lights

Taxiway centerline lights are used to facilitate ground traffic under low visibility conditions. They are located along the taxiway centerline in a straight line on straight portions, on the centerline of curved portions, and along designated taxiing paths in portions of runways, ramp, and apron areas.



Runway Lights

Runway lights enable safe and efficient airport operations during takeoff, landing, and taxiing. These lights typically indicate the runway edge, threshold, centerline, and touchdown zone.



Airport Beacons

Visual navigational aid (NAVAID) that uses flashes of light and color to indicate the location of airports, airfields, landmarks, heliports, or obstructions.



Obstruction Lights

Aviation obstruction lighting is used to enhance the visibility of structures or fixed obstacles which may conflict with the safe navigation of aircraft.



Wind Cones



The wind cone, also called the 'windsock' is a colorful tool at each airport that offers relevant information to pilots, allowing them to quickly and easily determine the approximate wind speed and direction before taking off or landing.

Solar Portable Lights

Solar runway lighting does not require cables, CCRs and transformers. It is powered by solar panels. Every light is connected to an individual solar panel. Control over the lights is performed by a wireless mesh network (again NO cables).



REL2700N-11-RT UPS System

25

REL 2700N-11-RT is a True Online, Pure Sinewave, Double Conversion and DSP Controlled UPS System. The UPS System protects your critical load by eliminating the Utility Power fluctuations, Sags and Surges and Failures by inherent Voltage regulation function and Battery Bank Support.



REL2700N-11-RT Series
UPS System 1-20KVA
110-220V PF0.8-0.9-1.0

Salient Features

1. Rack design aims at pivotal equipment, providing much more flexible and reliable protection
2. Using high reliable parallel redundancy technology realizes N+1 parallel redundancy function
3. Intelligent CPU/DSP design, the use of PFC power factor correction, input power factor greater than 0.99, the overall efficiency of more than 93%, the input current harmonic less than 5%
4. True online design, output pure sine wave, no pollution, and zero transfer time
5. Adopts the high frequency and IGBT technology, the overall efficiency and reliability of the machine are improved, with small volume and light weight.
6. Intelligent local and remote monitor capability with RS232 port, and compatible with SNMP
7. Self-diagnosis and protection function, strong load resistance capability, peak value of current and short circuit protection design.



info@emanftc.com



Al Slouley Building, Al Malaz,
Riyadh, KSA



www.emanftc.com

REL2700G4RT Series UPS

26

REL 2700N-11-RT is a True Online, Pure Sinewave, Double Conversion and DSP Controlled UPS System. The UPS System protects your critical load by eliminating the Utility Power fluctuations, Sags and Surges and Failures by inherent Voltage regulation function and Battery Bank Support.



REL2700G4RT Series UPS
DS PF1.0 Rated 6-10KVA 11

Salient Features

1. Rack design aims at pivotal equipment, providing much more flexible and reliable protection
2. Using high reliable parallel redundancy technology realizes N+1 parallel redundancy function
3. Intelligent CPU/DSP design, the use of PFC power factor correction, input power factor greater than 0.99, the overall efficiency of more than 93%, the input current harmonic less than 5%
4. True online design, output pure sine wave, no pollution, and zero transfer time
5. Adopts the high frequency and IGBT technology, the overall efficiency and reliability of the machine are improved, with small volume and light weight.
6. Intelligent local and remote monitor capability with RS232 port, and compatible with SNMP
7. Self-diagnosis and protection function, strong load resistance capability, peak value of current and short circuit protection design.
8. Vertical and horizontal design, tower and rack type free combination, installation is more convenient



info@emanftc.com



Al Slouley Building, Al Malaz,
Riyadh, KSA



www.emanftc.com

Revolutionising Machine Factory Production

27

REL2931IIR-10KVA UPS is the ideal solution for the protection of peripheral network devices, conventional or rack servers, network back-up systems, communication devices and VoIP equipment.



Stability and Reliability

- Based on DSP microprocessor control technology, simplifying the control circuit, higher flexibility and reliability of circuit
- Integrating short circuit, overload, overtemperature, output overvoltage/undervoltage protection and current limiting technique Improving the stability of the system
- Big design margin of power components, improving the reliability the system operation

High Efficiency and Energy Saving

- Pure chline double conversion design, isciating and filtering various harmonics and faults of grid
- On-line operational efficiency 95%, ECO mode efficiency up to 99%
- Smart fan speed regulation, reducing noise and saving energy consumption
- High power density design, small footprint, higher operating efficiency

Flexibility and Applicability

- The UPS can be installed as a tower or in 19" rack cabinets by simply rotating the display panel
- 50/60 Hz power system adaptive
- Optional battery extension packs can be connected to increase UPS runtime
- Support two modes of frequency conversion: 50 Hz input/60 Hz output or 60 Hz input/50 Hz output
- Programmable via display panel: ECO mode, EOD point, output voltage 220 V/230V/240 V selectable



info@emanftc.com

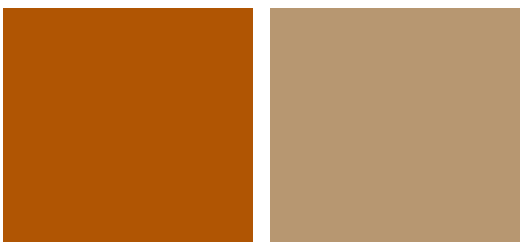


Al Slouley Building, Al Malaz,
Riyadh, KSA



www.emanftc.com

CIVIL & MAINTENANCE





ELECTRICAL MAINTENANCE AUTOMATION NETWORK

About Us

Eman Trading & Maintenance company is a trusted provider of industrial automation, power management, and control solutions with 25+ years of experience.

Contact Us



info@emanftc.com



Al Slouley Building, Al Malaz,
Riyadh, KSA



www.emanftc.com

Why Choose Us?

- Customized Automation Solutions
- Reliable Power Management
- Precision in Process Control
- Technical Support & Maintenance
- Power Distribution & Control Systems
- Custom Solutions & Consultancy